

HD45 Hammer Drill



Specifications		
ITEM	U.S.A.	METRIC
Chuck Capacity	Up to 2 in. dia. or 4 in. core, 736 Skil hex	
Output	0 – 300 rpm	
Input Flow Range	7 – 9 gpm	26 – 34 lpm
Input Pressure	1500 – 2000 psi	105 – 140 bar
Optimum Flow	8 gpm	30 lpm
Weight	45 lbs	20.4 kg
Length	22.5 in.	57 cm
Width (at handles)	14 in.	35 cm
Motor	Internal	
Porting	8 SAE O-Ring	
Connector	3/8 in. Male Pipe Hose End	

Features and Benefits

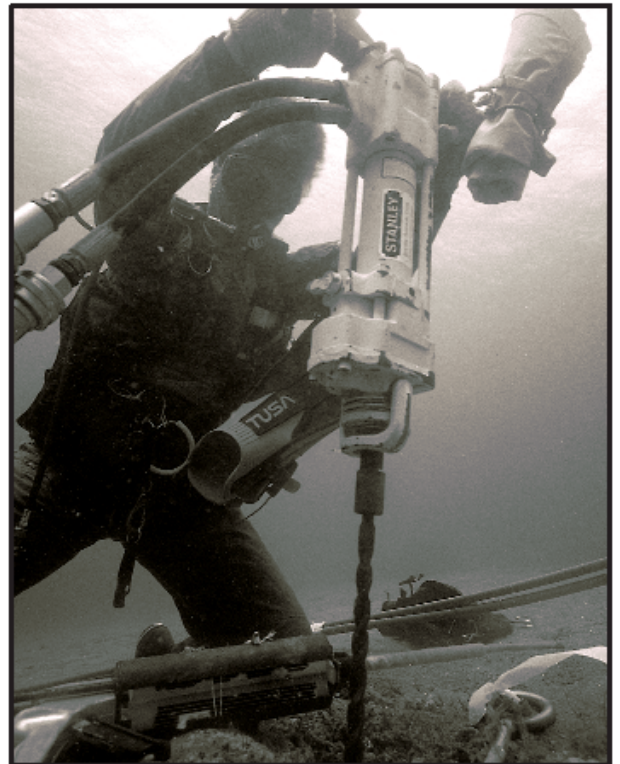
Stanley Hydraulic Tool's **HD45** Hammer Drill is a heavy duty model designed for use in medium to heavy applications. It's the ideal tool for drilling gas and water utility holes and setting anchor bolts.

Drills Holes from 3/4 in. (19 mm) to 2 in. (50 mm) in diameter and up to 29 in (73.7 cm) deep as well as core drilling up to 4 in (102 mm) in diameter.

Uses Standard Skil 736 type carbide tipped, fluted drill bits and requires no fluid to clear holes during operation.

Feathering On/Off Valve/Adjustable Bit Rotation Speed (*forward and reverse*) make the **HD45** easy to start and easy to control.

Underwater Models Available





639 Manhattan Blvd.
 Harvey, LA 70058 USA
 TEL: (504) 362-8124
 FAX: (504) 362-3600
www.aquaairind.com
 EMAIL sales@aquaairind.com

HD45 Hammer Drill Cont.

Accessories	
PART NO.	DESCRIPTION
Carbide Bits	
02280	¾ in. x 24 in. (61 cm) Length, 14 7/8 in (37.8 cm) Deep Hole
05163	7/8 in. x 24 in (61 cm) Length, 14 7/8 in (37.8 cm) Deep Hole
04668	1 in x 18 in (45.7 cm) Length, 8 7/8 in (22.5 cm) Deep Hole
02281	1 in x 24 in (61 cm) Length, 14 7/8 (37.8 cm) Deep Hole
02282	1-1/4 in x 24 in (61 cm) Length, 14 7/8 in (37.8 cm) Deep Hole
04896	1-1/4 in x 36 in (91.4 cm) Length, 29 in (73.7 cm) Deep Hole
05167	1-1/2 in x 24 in (61 cm) Length, 15 in (38.1 cm) Deep Hole
02283	2 in x 24 in (61 cm) Length, 14 ¾ in (37.5 cm) Deep Hole
30279	Adapter to Accept Percussion Core Bits
Carbide Percussion Core Bits (Part Number 30279 Required)	
27896	1 in dia. x 6 in (15.2 cm) LOA
27897	1-1/8 in dia. x 6 in (15.2 cm) LOA
27898	1-1/4 in dia. x 6 in. (15.2 cm) LOA
27899	1-1/2 in dia. x 6 in (15.2 cm) LOA
27900	1-3/4 in dia. x 6 in (15.2 cm) LOA
27901	2 in dia. x 6 in (15.2 cm) LOA
27902	2-1/2 in dia. x 6 in (15.2 cm) LOA
27903	2-3/4 in dia. x 6 in (15.2 cm) LOA
27904	3 in dia. x 6 in (15.2 cm) LOA
30834	4 in dia. x 6 in (15.2 cm) LOA
27905	Percussion Core Bit Spline Adapter for HD45
30278	Core Bit Pilot (recommended for 2-1/2 in and larger core bits)

Ordering Information	
PART NO.	DESCRIPTION
HD45110B	HD45 Hammer Drill with Hose Whips
HD45310	HD45 Underwater Hammer Drill with Hose Whips